

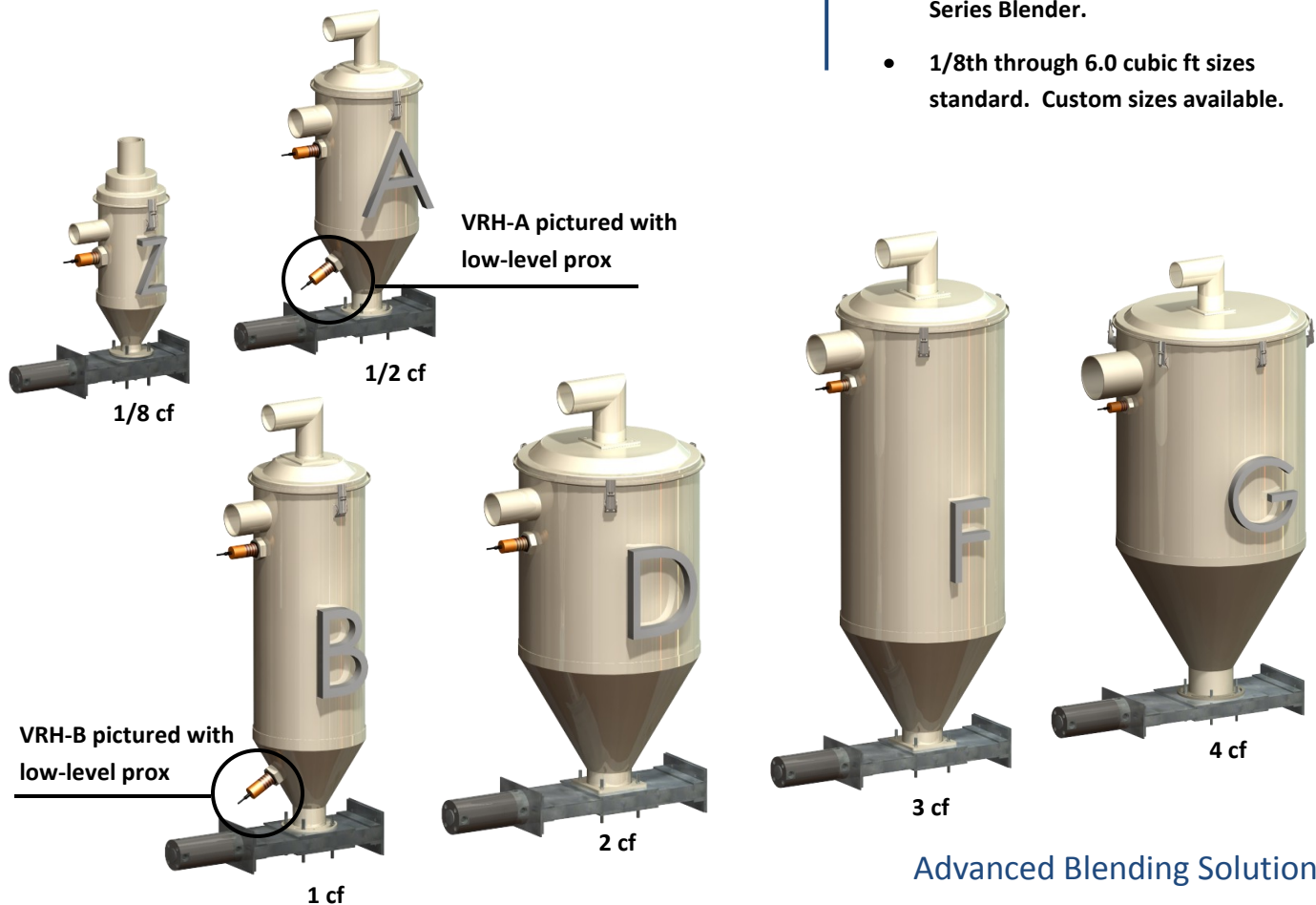


Vacuum Receiver

Advanced Blending Solutions' Vacuum Receivers were developed for optimal productivity and up-time. Flapper-style vacuum receivers come with an industrial hinge for consistent swing, and an inductive prox for simple set-up and operation. Vacuum Receivers can also be purchased with Knifegates on the output allowing the vessel to serve as a surge hopper and eliminating potential leaks due to pellet wedging—a common occurrence in flapper-style Vacuum Receivers.

Advanced Blending Solutions manufactures a full line of vacuum convey, blending, gravimetric, and control equipment for the plastics industry. Advanced Blending Solutions also offers a full line of PLC-based controls for gravimetric extrusion control, vacuum sequence control, extruder/die temperature control, and blender control. Advanced Blending Solutions offers PLC-based control retrofits for any blender on the market.

- **Field tested.**
- **High-quality pneumatic components.**
- **Industrial-style, long-life hinges and latches.**
- **Inductive prox sensor to eliminate hard-to-adjust, unreliable magnetic sensors.**
- **Pellet screen or integral dust collection.**
- **Can be integrated with Simplicity Series Blender.**
- **1/8th through 6.0 cubic ft sizes standard. Custom sizes available.**



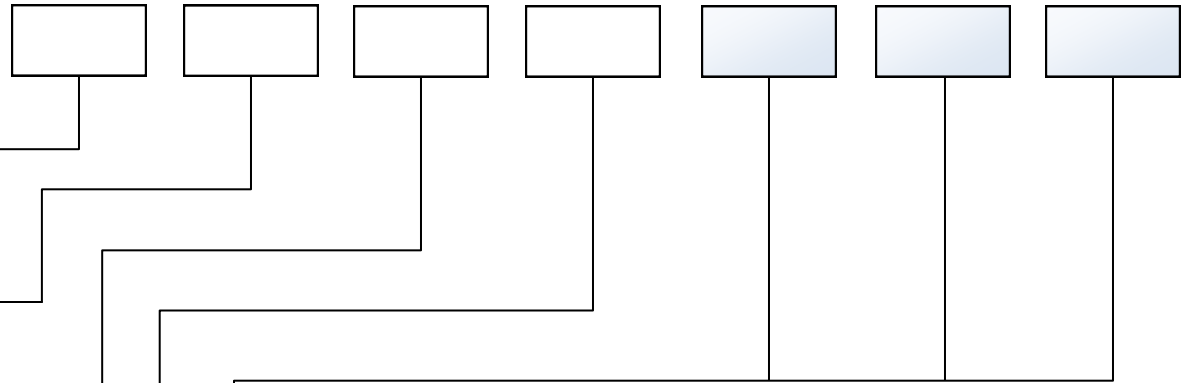
Advanced Blending Solutions

Ph. 888-204-5080 Fx. 906-914-4179

www.Adv-Blend.com

Ordering Information

Enter in each box the letter or number corresponding to your specifications when ordering.



Style

VR - Standard
VRH - Vessel w/Prox

Vessel Size

Z - 1/8 cf
A - 1/2 cf
B - 1 cf
D - 2 cf
F - 3 cf
G - 4 cf
Custom sizes available upon request

Cover Style

RV - Remote Valve
24 - 24V DC
120 - 120V AC
SL - Self-loading Vacuum Receiver
w/Vacuum Blower

Outlet Style

KG - Integral Knifegate
FLP - Integral Flapper

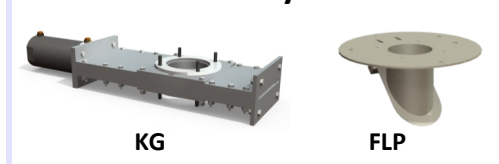
Options

HT - High Temp
SS - Stainless Steel
LL - Low Level Prox

Cover Styles



Outlet Styles



Category Explanations

Vessel Size

These are the standard sizes offered. Advanced Blending Solutions also offers custom sizes upon request.

Cover Style

RV - This designates that the vacuum does not come with a Vacuum Sequence Valve. Applications include Vacuum Receivers with a dedicated pump or Vacuum Receivers used in conjunction with a Vacuum Sequence Manifold or an external valve.

24 - This cover has a Vacuum Sequence Manifold on the cover. Control voltage is 24V DC.

120 - This cover has a Vacuum Sequence Manifold on the cover. Control voltage is 120V AC.

SL - This cover style features an integrally mounted vacuum blower for conveying materials over short distances. This style eliminates the need for a central pump system. Only use this option if conveying lower rates over relatively short distances.

Output Style

KG - This output has an orifice knifegate. Knifegate size varies based on receiver volume.

FLP - This output has an industrial-style flapper.

Options

HT - High temperature option for up to 350° F (Standard receivers rated for 200° F). The default material for high temp vessels is 304 Stainless Steel.

SS - Vessel body and cover upgraded from Mild Steel to 304 Stainless Steel.

LL - Low Level Prox measures when material level is low.



Ph. 888-204-5080 Fx. 906-914-4179

www.Adv-Blend.com

Publication: Vacuum Receiver-2
September 2010